



Imprints cares

PEDIATRIC PARENTING CONNECTIONS Executive Summary

Pediatric Parenting Connections

Pediatric Parenting Connections (PPC) is a co-located **evidence-based pediatric model** developed in partnership with Atrium Health Wake Forest Baptist (AHWFB). Referrals are generated by pediatric practices and The Birth Center at AHWFB. PPC meets parents where they are and integrates:

- positive parenting
- intensive home-visitation
- mental/behavioral health
- developmental support services

With PPC, current and future pediatricians provide warm hand-offs while delivering medical care beyond a clinic's walls, addressing child health needs within the context of their family and community.

Imprints Cares has validated the outcomes of PPC over 13 years. At the core of PPC — and key to its success — is the international evidence-based Parents as Teachers (PAT) model.



Benefits of the PPC model:

- Streamlines referrals to connect more families to needed resources
- Is easily implemented in resident and non-resident medical practices
- Reduces duplication in services
- Provides warm hand-offs to ensure families don't get lost in the system
- Addresses social drivers of poor health outcomes



Imprints Cares is a PAT **Blue Ribbon** affiliate and received the **Losos Prize** in 2017. Through our full spectrum of evidence-based programming, Imprints Cares has continued to innovate and serve more families with even greater effectiveness.



PPC impact is tracked with **qualitative and quantitative metrics** including:

- ✓ Indicators of normal child development.
- ✓ Health and indicators of ACES and toxic stress.
- ✓ Changes in parental behavior.
- ✓ Preventive health: breastfeeding, well-child checkups, health literacy, vaccinations, etc.
- ✓ Outputs: Referrals made/kept, parent satisfaction, parent participation in workshops/group meetings

100% of PPC staff are PAT-certified and carry a caseload of families they serve through intensive home visits.



PPC staff had **726** client encounters from referrals in the last year.

851

1000



books were delivered through **454** home visits.



Comprehensive Referral Support

Emmy is 2.5 years old. Her mother shares a concern with Emmy's pediatrician regarding a possible speech delay.



The pediatrician provides a warm hand-off for an in-office assessment by a PAT-trained Imprints Cares Family Educator (FE).



If the assessment is borderline, Emmy is referred to PAT for intensive home visits. She is reassessed in 2–3 months. If she is progressing, PAT visits continue. If not, PAT visits are supplemented with a referral to Early Intervention.

If a speech delay is evident, Emmy is referred to Early Intervention.

Access to electronic medical records allows open and ongoing communication between the Family Educator and the clinician.

The American Academy of Pediatrics emphasizes the importance of future pediatricians addressing child health needs **within the context of their family and community**. As part of the Wake Forest Pediatric Advocacy Program, all residents attend an Imprints Cares orientation and shadow a PAT family educator on a home visit. Residents were surveyed pre- and post-visit.



Home visits should be part of the pediatric residency curriculum.

Before visit: **3.5**

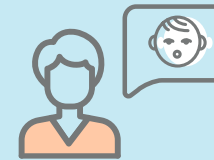
After visit: **4.3**

(Avg scores on a 5-pt Likert scale)



Kayla is a young mom who is struggling to breastfeed her son, Kyle.

Kyle's pediatrician refers Kayla to a PPC-certified breastfeeding educator.



After in-person support and follow-up, Kayla successfully breastfeeds Kyle.

PPC improves early intervention, provides secondary prevention of child maltreatment, and increases referrals to development services.

PAT referrals from PPC	2022: 265
	2021: 128
	2020: 125

Early Intervention referrals from PPC	2022: 135
	2021: 111
	2020: 98

Imprints Cares seeks a strategic partnership with Parents as Teachers to roll out our proven Pediatric Parenting Connections program as a national model for other PAT affiliates.



Winston-Salem, NC • imprintscares.org